





main connection

connector

system02|crosspoints

room units

room units|structure

## rotation||energy><space transformer

1. whole system
2. the nozzle itself

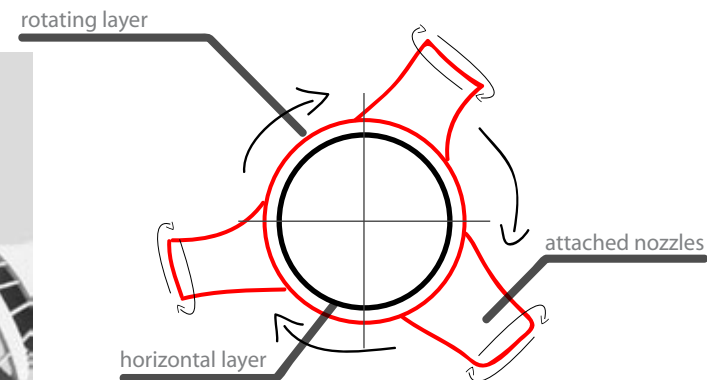
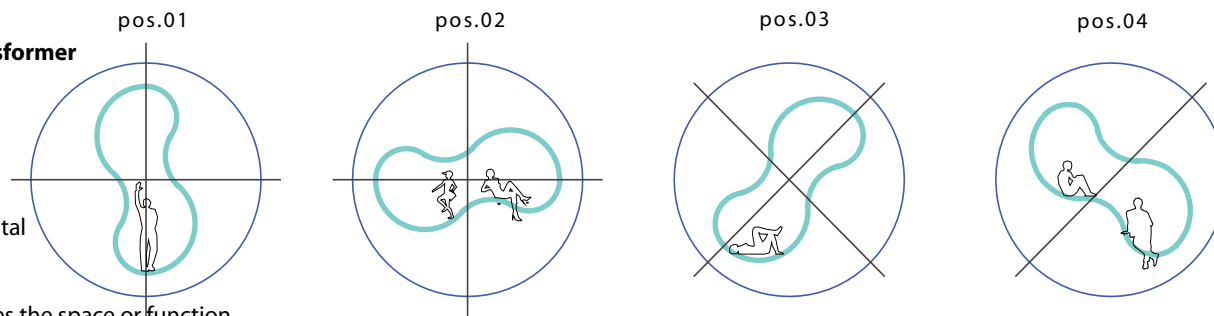
## double layered skin||

the external layer is rotating  
the inner layer is staying horizontal

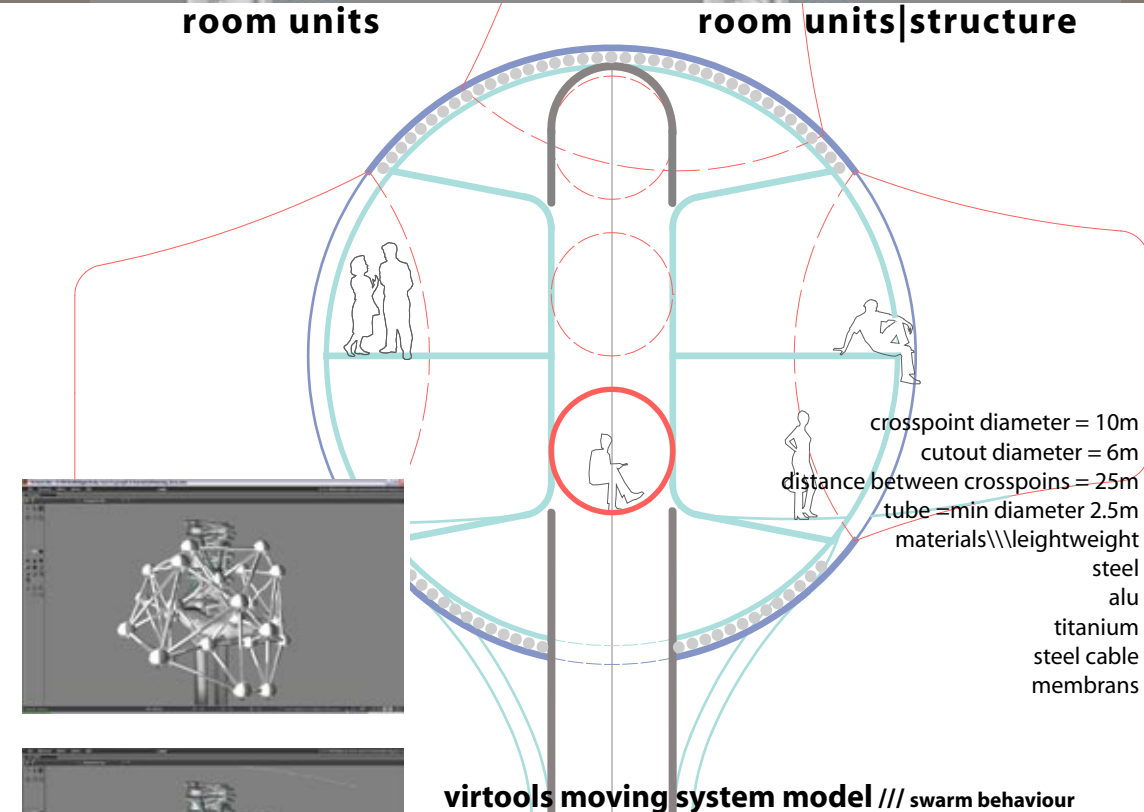
## nozzle||

is a free room>>>rotation defines the space or function...  
aerodynamic shape

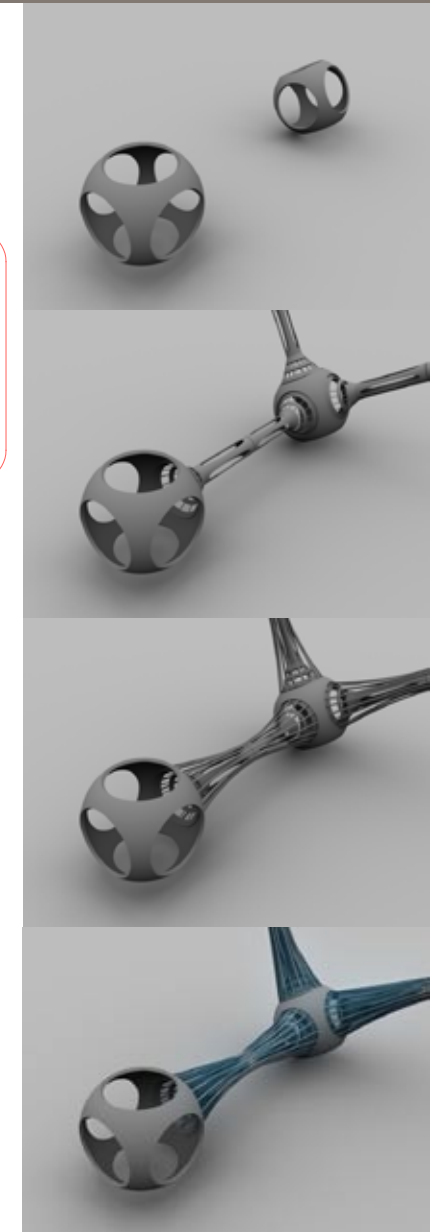
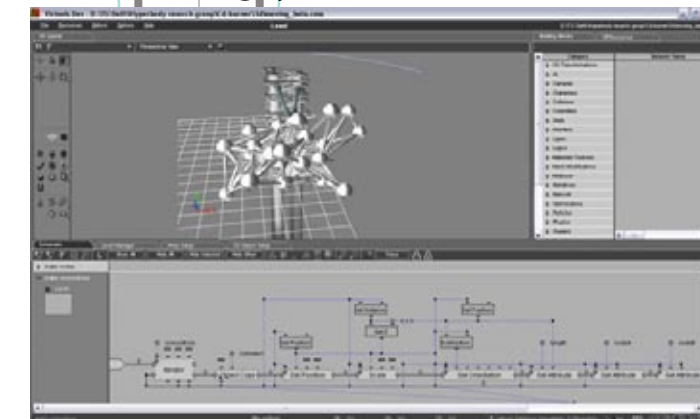
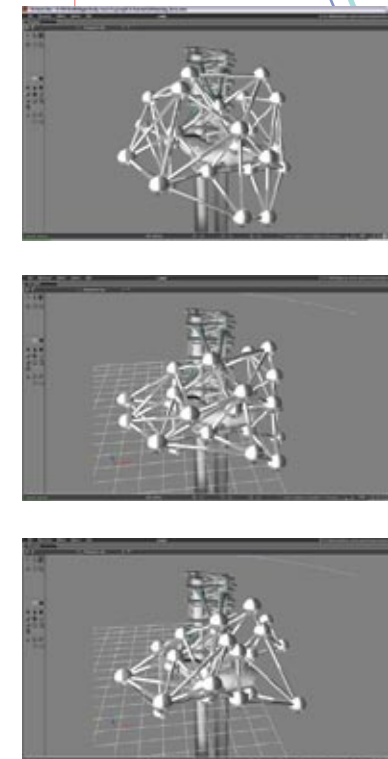
inside the sphere main functions (bathroom, bedroom, kitchen...)



\\\\transport system  
\\\\between the crosspoints escalator  
the idea is to have a quick and comfortable  
transport from crosspoint to crosspoint!  
\\\\to the room units is planned a magnetic rail  
the connection tube to the room units has  
a diameter about 2.5m.  
the transport unit itself is a sphere in wich  
could fit at least three people!



## virtools moving system model /// swarm behaviour





myspace music

Click here!

myhive

music

Tune in Now to check out the Top Artists

kimkong

Male

28 years old

Beijing

Last Login:

11/30/2006

View My: Pics | Videos

Contacting kimkong

Send Message

Forward to Friend

Add to Friends

Add to Favorites

Instant Message

Block User

Add to Group

Rank User

räuberhöhle

RÄUBER

HÖHLE

Nina Hemmingsson

Gaffaman

NORA BELOW

sara clausson

Eftermiddagshorisont

Nils

playing

00:04

Total Plays: 1019

Downloads Today: 1

Plays Today: 16

DATA EXCHANGE

units

users

factory

transport

skin

acceleration

ACCELEROMETER

heat

COMPOSITE

orientation

GYRO

position

RFID

inhabited?

RFID

connections

PRESSURE

size

F-MEMORY

user preferences

F-MEMORY

function

F-MEMORY

position

RFID

acceleration

POSITION/TIME

task

POLL

virt. position

COMPUTER

IP address

web-history

status

F-INPUT

income

stock

preferences

F-INPUT

education

work

interests

social factors

modification script

production script

transport script

design script

postition script

connection script

structure script

movement script

expansion/contraction

ecology script

destruction script

addition script

production schedule script

flow regulation

utilities script

transition script

neighbour awareness

F-MEMORY + CONNECTION

edge length

FESTO

wind

ANEMOMETER

temperature

THERMOMETER

position

RFID

pressure

PRESSURE

light

PHOTOMETER

flow type

F-MEMORY

flow rate

RFID/CAMERA

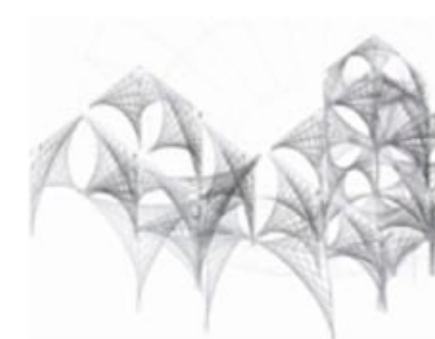
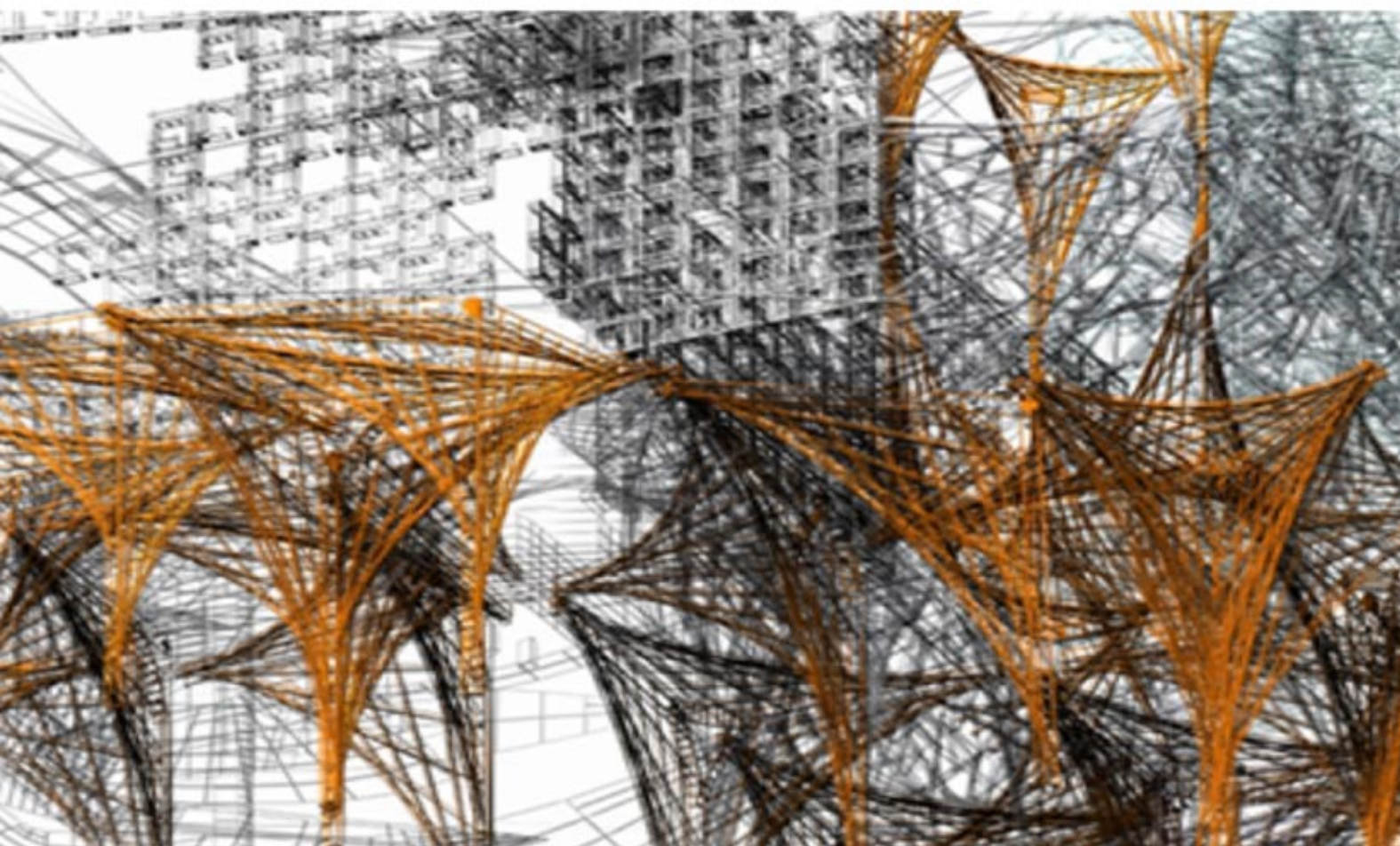
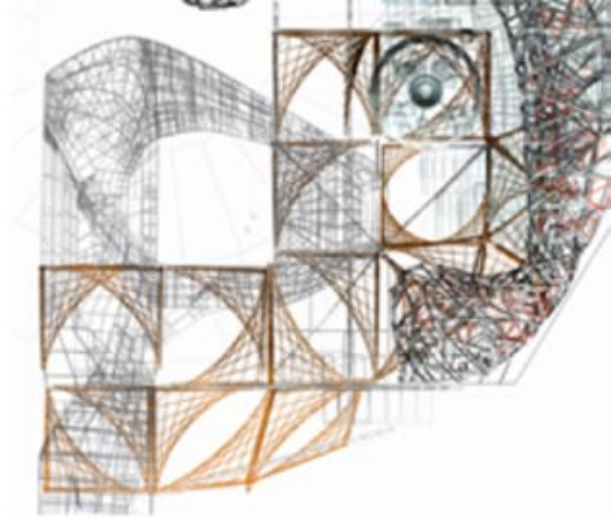
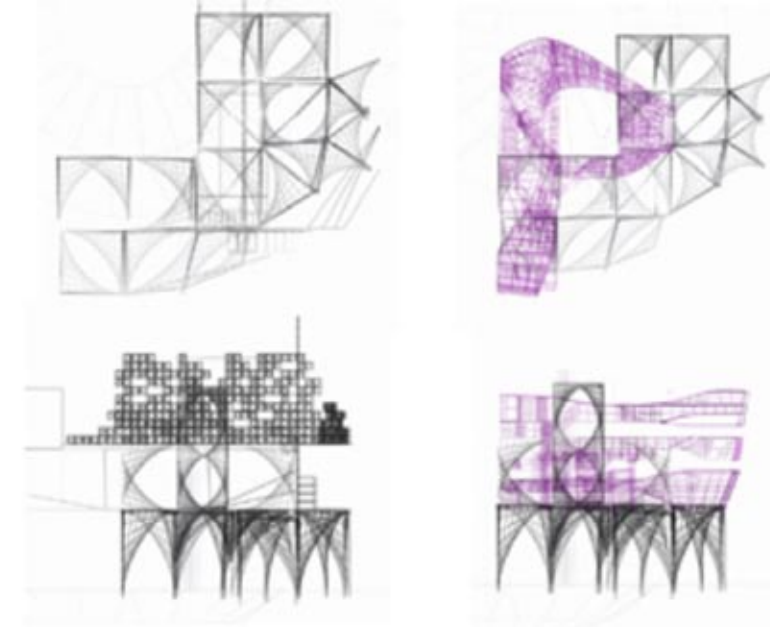
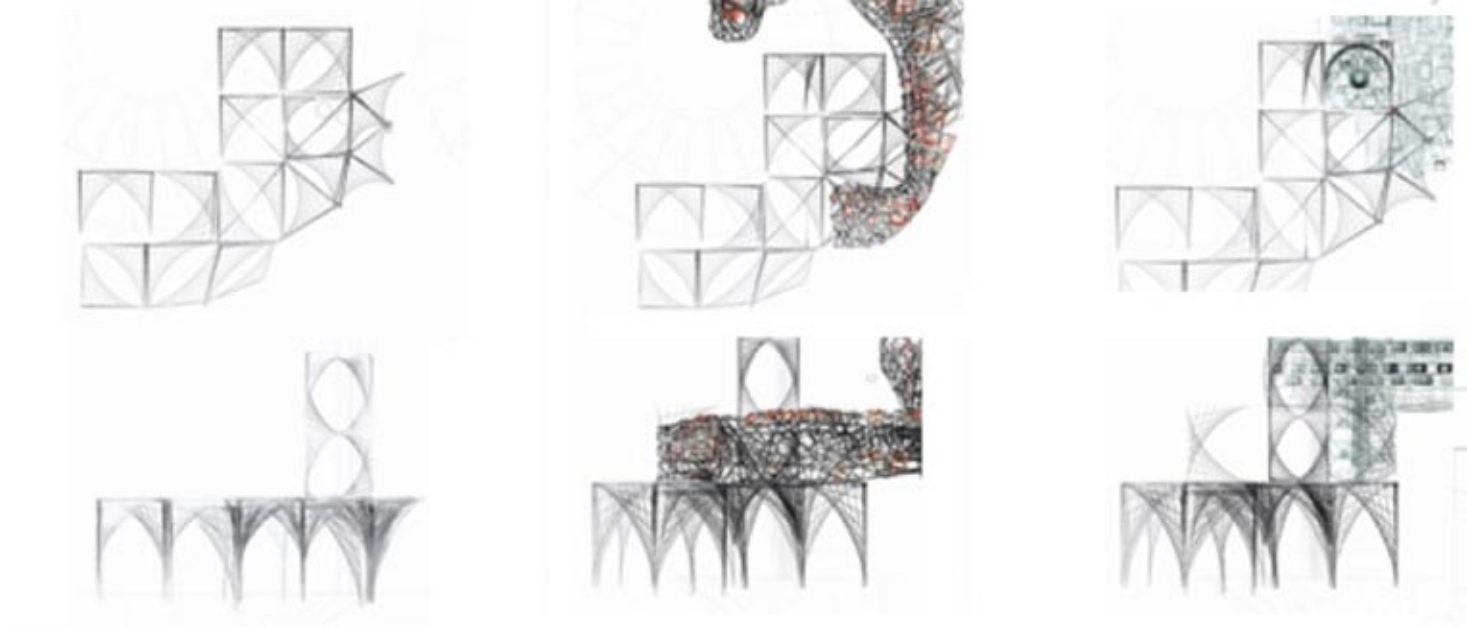
your hive network

information flow in the hive

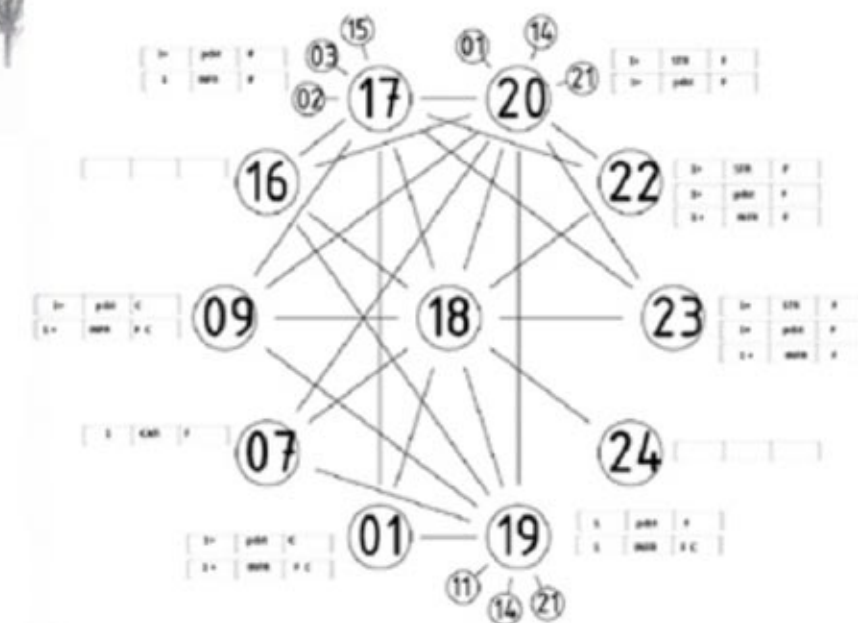
92

93





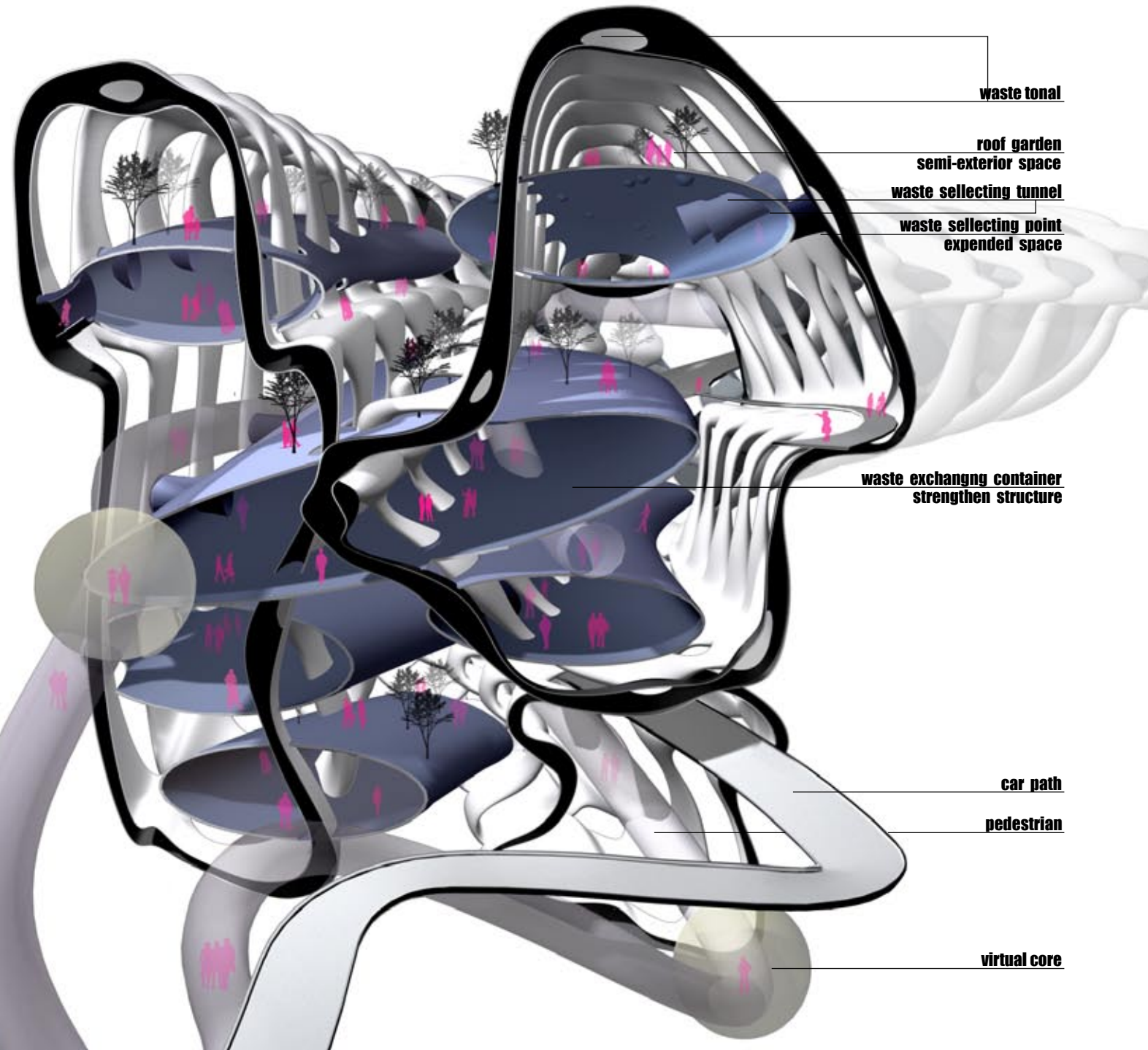
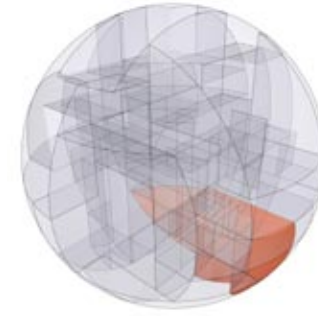
- [18]-[01]: infrastructural
- [18]-[07]: pedestrian flow, car connection
- [18]-[09]: structural, pedestrian flow
- [18]-[16]: not defined
- [18]-[17]: pedestrian flow
- [[18]-[19]: infrastructural, pedestrian flow
- [18]-[20]: structural, pedestrian flow
- [18]-[22]: structural, pedestrian flow
- [18]-[23]: structural, pedestrian flow
- [18]-[24]: not defined





## Zone 18 - Stomach

Feng Lin



该建筑像胃一样服务于地处北京751的超合球体。它从周围的地块收集垃圾，其中一部分被来自其他地块的艺术家选为艺术品的材料，剩余的被回收转化为能源供给其他地块。

其他地块的艺术事件将被追踪纪录并转化为抽象的虚拟影像输入到虚拟核心中，而这些虚核根据每两块地块的物理核心在球体中的拓扑关系挤压定位于该地块中。人们在虚核内看到影像时的本能反应，将通过脑电波触发虚核表皮的交互变化。

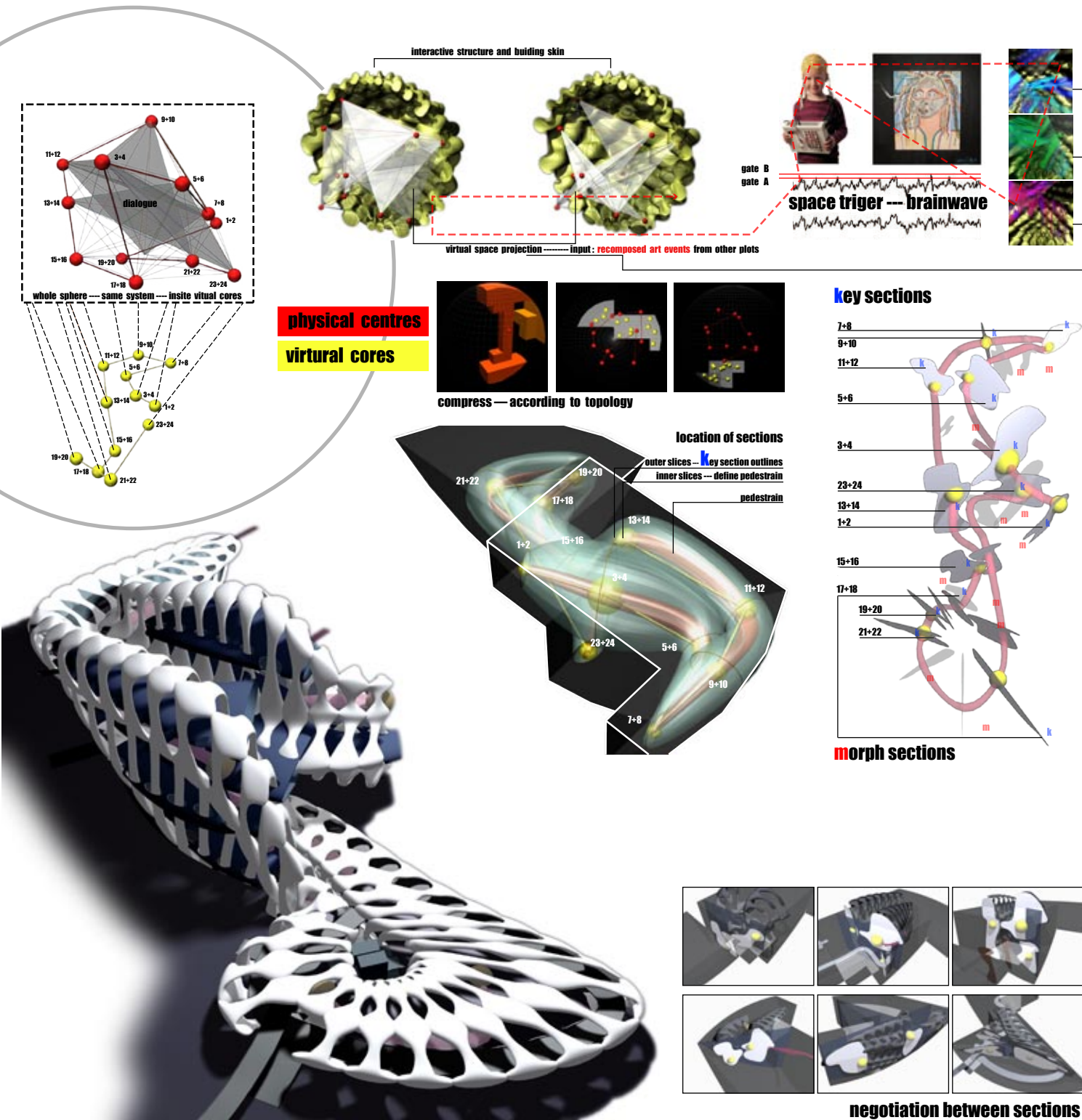
该地块在球体中的位置以及垃圾传输、转化的功能决定了结构系统的形式。该建筑的表皮系统通过编程控制其生成。只要给定两条曲线，就可以运行程序生成具有细部的建筑表皮。其中的每个构件具有不同的符合力学逻辑的尺寸。建筑的几种主要功能（商业/办公/文化/停车场）服务于共同的主题——垃圾。

This building serves as a stomach of the hybrid sphere in Beijing 751. It collects waste from other plots. Some of that waste can be selected as material for art. The rest gets recycled and transferred into energy.

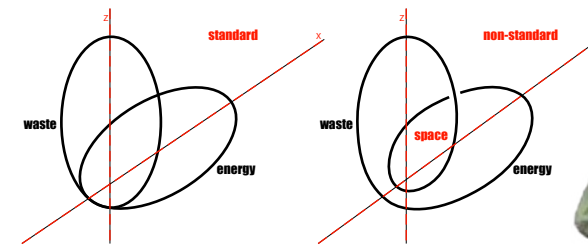
Art events from the other plots become an input for virtual cores, which are located according to the topology of plot's physical centers. In these virtual cores, people's reaction toward virtual image will activate the skin of the virtual core by the brainwaves of users.

The position of site and waste transfer function together and form the structure of the system. The building has a parametric skin system. So long as there are two curves, a set of non-standard detailed skins can be generated by a running script, according to the logic of force. In this zone, there are several main kinds of functions: commercial, office, culture and parking. All of them relate to the main topic: waste.

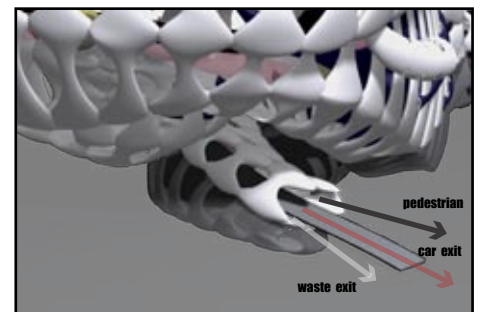
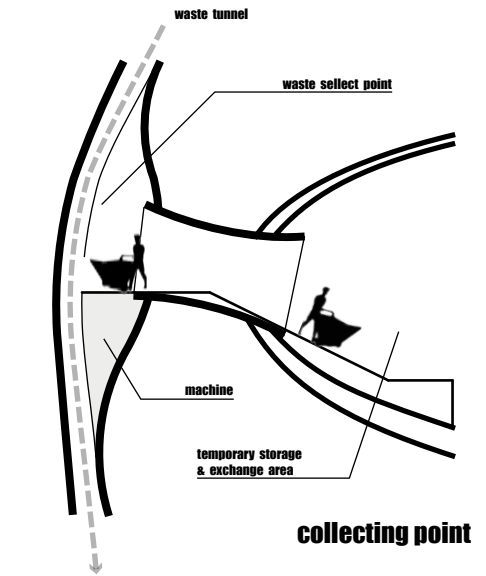
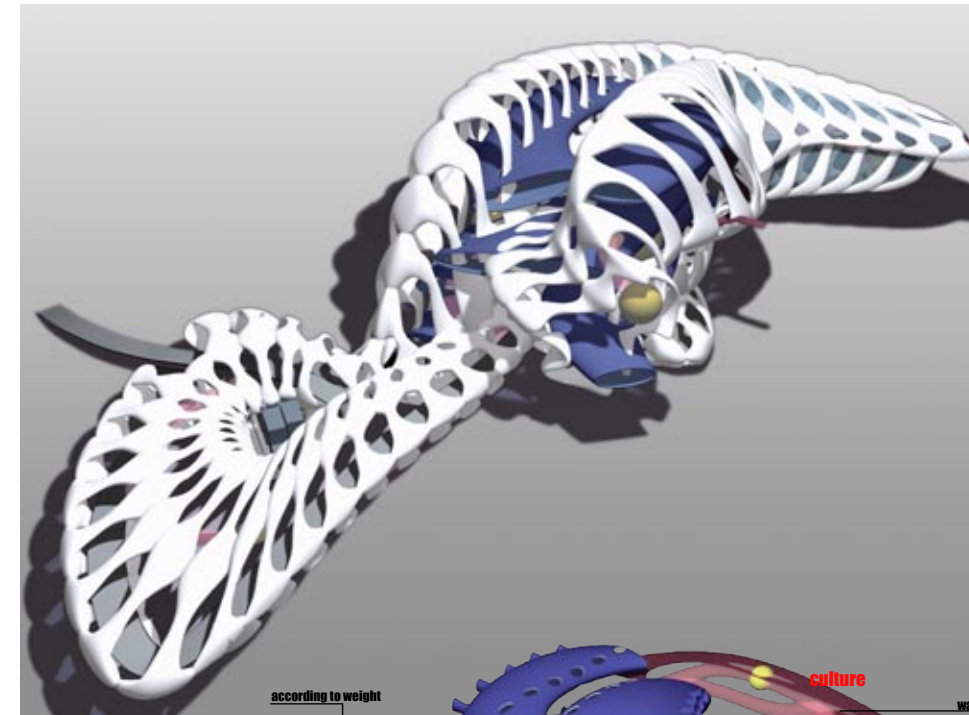
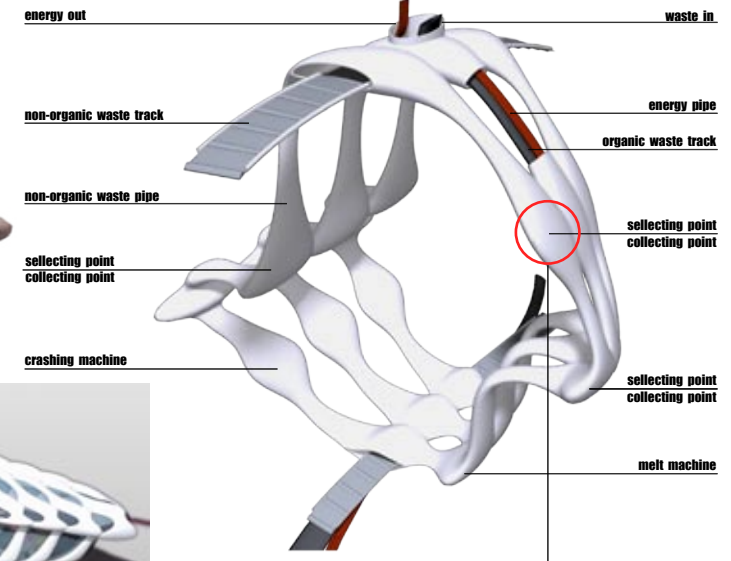




position + function → structure system



body under pressure



function

exit